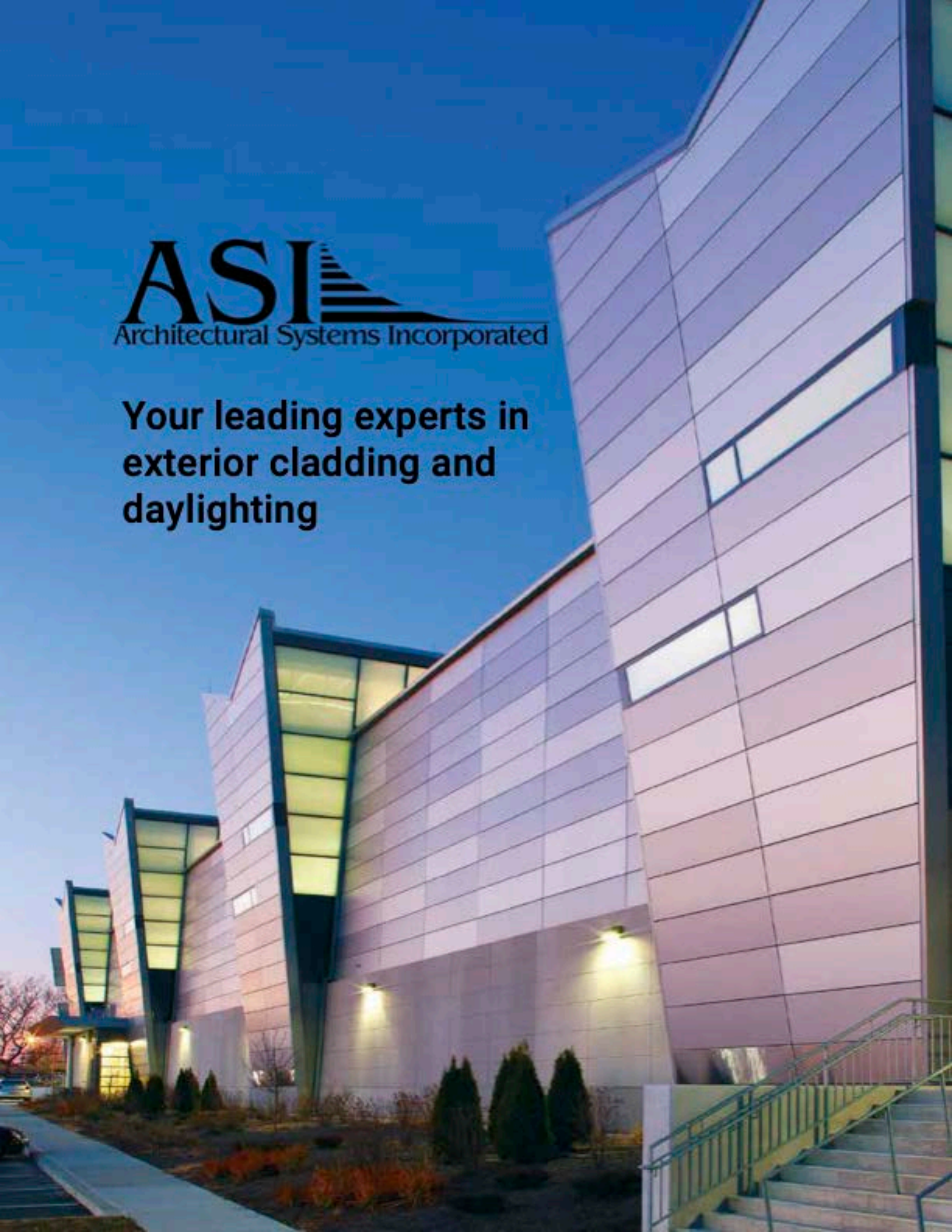


The logo for ASI Architectural Systems Incorporated features the letters 'ASI' in a large, bold, serif font. To the right of the letters is a stylized graphic consisting of a series of horizontal lines that form a triangular shape, resembling a staircase or a modern architectural element. Below the 'ASI' text, the full name 'Architectural Systems Incorporated' is written in a smaller, sans-serif font.

ASI
Architectural Systems Incorporated

**Your leading experts in
exterior cladding and
daylighting**





About ASI

Architectural Systems Incorporated (ASI) was founded in 1992 by Joseph Karscig. As a Mechanical Engineer with a strong background in sales, Joe quickly developed ASI into a locally owned material supplier in the greater San Diego area serving all of California and Las Vegas.

Our mission is to provide top-tier products and services you need to make any dream building a reality. We're partnered with several of the world's finest material manufacturers including Kalwall, Cembrit, Centria, Citadel, GKD, American Fiber Cement and most recently Fundermax.

What separates ASI from other manufacturing suppliers are the services we provide alongside our products. Whether you need design assist, engineering, installation support, shop drawings, or pricing options, our goal is to make your job easier.

Rainscreen



- Foam Insulated Wall and Roof Systems
- Concealed and Exposed Fastener Panels
- Integrated Louvers and Windows
- Aluminum Plate Panel Systems



- Metal Composite Material
- Exterior Cladding System
- Glazing Infill Panels
- Clean Room Panels



- Aluminum composite panels are an exceptionally flat, high-tech architectural panel with a polyethylene core
- Crisp lines, quality finishes, and creative panel shapes
- A light weight product that will not distort or fade over time



- High-pressure laminate (HPL) panels ensure design flexibility and durability
- Come in a wide range of colors, surfaces, and materials
- Code compliant, NFPA-285 rated and easy to install panels



American Fiber
Cement Corporation

- Non-combustible, long-lasting, and extremely durable panels
- Highly resistant to water staining and dirt
- Panels come in a variety of timeless colors



- Perforated panels that are manufactured from a high-speed punch press.
- Create perforations that are unique or contain complex designs

Skylights



- High Performance skyroof systems
- Museum Quality Daylighting
- Unequal Thermal and Solar Controls



- Sun Tunnels
- Modular Skylights
- Custom VMS Options

Daylighting Facades



- Budget-friendly, elegant side lighting solution
- Transforms sunlight into glare-free daylight
- Rapid installation that saves time and money

Subframe



- Adjustable cladding support system
- A uniquely designed girt system specifically for rain-screen applications
- Compatible with all types of insulation.



- Complete aluminum subframe platform of adjustable bracket and rail systems
- Ability to interchange multiple cladding materials
- Full range of design-assist, engineering, and installation support



- Superior thermal performance
- High structural strength
- Safety in the event of fire
- Adjustability to deal with uneven wall substrates





- Technologically Advanced Woven Metal Fabric
- Solutions for an Array of Interior and Exterior Applications
- Crafted of Non-Corroding High-Grade AISI Type 316 Stainless Steel
- 100% Recyclable Material

VAN NUYS

FLYAWAY

LONG TERM PARKING

Entrance



Services

ASI is unique from other manufacturing suppliers because of the services we provide including:

- Design assistance
- Budgeting analysis
- Subcontractor networking
- Daylight Modeling System
- Shop Drawings
- Direct Program Management

Whether you're an Architect, General Contractor, or Subcontractor, we're here to help you every step of the way. Call today (858) 679-9760 or email office@asi-sd.com to set up an appointment with our team and find out why ASI is the right fit for your project.

www.asi-sd.com

